

SUBSCRIPTION FORM

Please complete the following details and send with your subscription to the address below.

Cheques should be made payable to Friends of Brandy Hole Copse.

Please write clearly so we may record your details accurately.

Name:

Address:

Postcode:

Telephone:

Email:

Annual subscription: £5

Donation:

Total:

Signed:

Date:

Please send to:

Michele Craddock

Membership Secretary

Spinney's House

9 Bristol Gardens

Chichester

PO19 5EA



Brandy Hole Copse

- A natural area of old coppice and mixed woodland
- An area of 15 acres, with ecologically rich field boundary
- Three permanent ponds and two ephemeral ponds
- Remains of an ancient entrenchment (scheduled ancient monument)
- Old World War 2 anti-tank defences still in place
- Uninterrupted view to the cathedral spire
- Network of paths to explore

UNDER THREAT FROM DEVELOPMENT PROPOSALS

Would you like to see Brandy Hole Copse and its neighbouring fields protected from housing development? If so, please join us, the Friends of Brandy Hole Copse. Together, with your support, we can raise awareness of the specialness of this area and make sure it is protected from development. Please join today!



For more information contact:

Mr Tony Dignum

Chairman

Highgate House

West Broyle Drive

Chichester

PO19 3PP

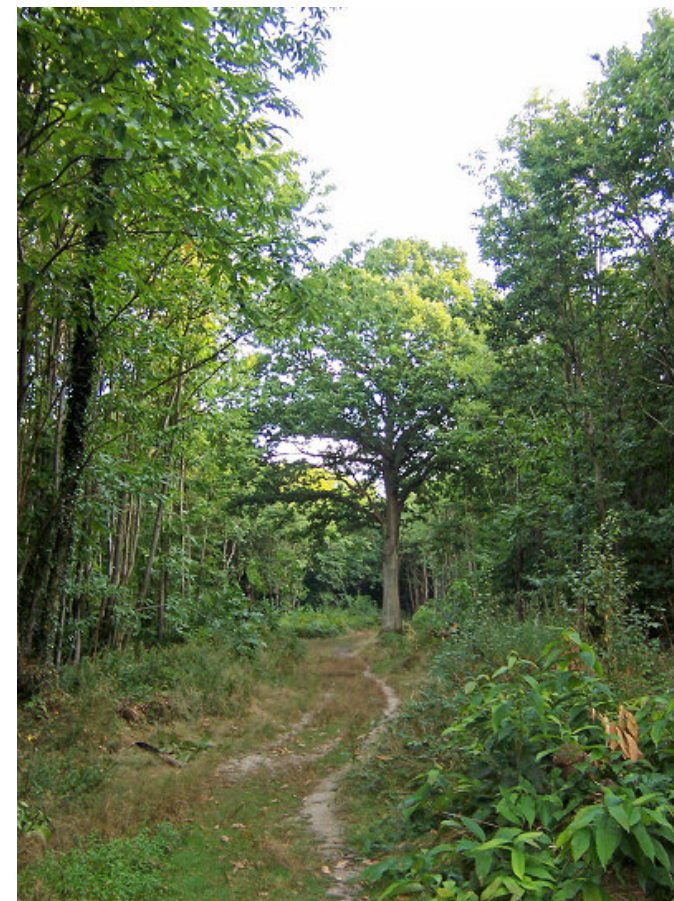
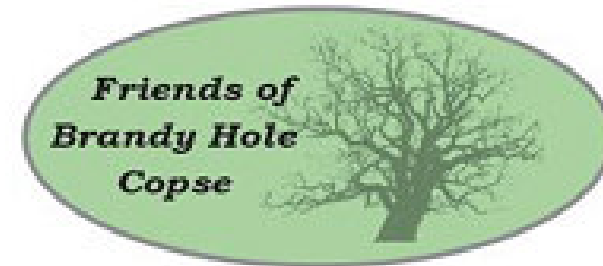
01243 538585

tonydignum@btinternet.com

Mr Tom Snow

Secretary

tomgsnow@btinternet.com



Caring for Brandy Hole Copse
Chichester's only designated Local Nature Reserve

www.brandyholecopse.org.uk

Friends of Brandy Hole Copse

The group was originally formed in 1988 under the name of the Brandy Hole Copse Conservation Group to look after the woodland after the devastating effects of the Great Storm of 1987. The Friends provides a focus for voluntary support and activities for the protection Brandy Hole Copse. The name 'Friends of Brandy Hole Copse' was adopted in 2007 to reflect the wider interest of local people in the future protection of the Copse.

Since 1988 the group has worked to conserve and enhance the Copse both for nature conservation and for the enjoyment of its many visitors, most of them residents of Chichester. The Copse was awarded the status of Local Nature Reserve in 2001.

Our growing membership includes local residents, dog walkers, naturalists and members of other local community groups and visitors such as our members' family and friends. Membership is open to anyone who enjoys visiting the Copse and is interested in supporting its protection as an amenity, for nature conservation and against development for housing.

Aims:

To manage the Copse for nature conservation.
To manage the Copse for the benefit of the visiting public.
To protect the Copse from pressures of housing development.
To provide education and information so that people may learn more about this special local nature reserve.

Benefits of becoming a Friend:

By joining the Friends of Brandy Hole Copse you will add your support to our efforts to protect the Copse for nature conservation and for the enjoyment of people.

Assistance with our administration and practical work such as glade clearing through our regular work parties would also be welcome but is entirely optional.

We will keep you in touch with news and events through our regular newsletter and online at www.brandyholecopse.org.uk



How you can join us

We welcome all new members.

The subscription of just £5 is kept low so that no one should be excluded.

I would be interested in (please tick all that apply):

- attending talks and walks
- delivering newsletters
- joining the committee
- looking after a notice board
- doing survey work
- helping on practical work parties
- giving a donation
- offering skills such as:

- I am interested in the work of the Friends but am currently unable to offer any active assistance.

Please complete the form overleaf and detach this section and return with your subscription to the membership secretary's address.

